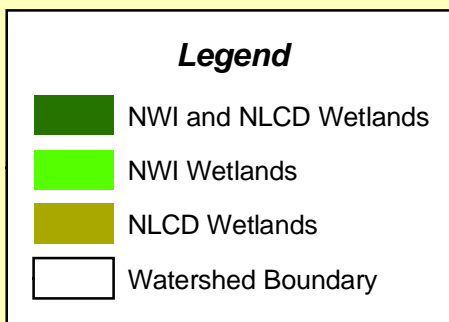
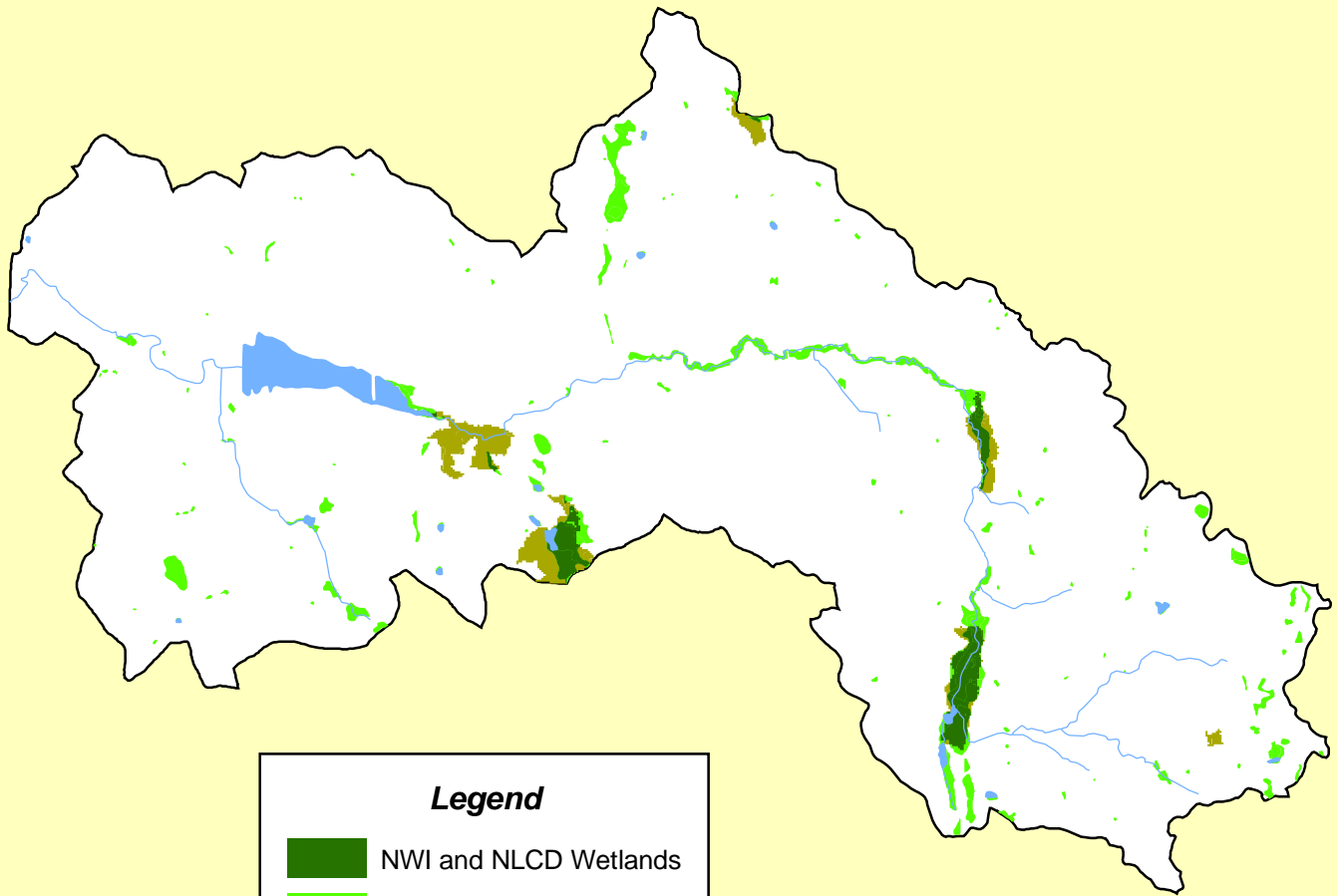


Wetlands within the Woodcock Creek Watershed in Pennsylvania



Area of watershed is 13,187 hectares.

Wetlands as designated in the NWI database represent 3.2% of the watershed and account for 420.2 hectares.

Wetlands as designated in the NLCD database represent 2.03% of the watershed and account for 268.02 hectares.

Only 124.05 hectares were identified as wetlands by both the NWI and NLCD databases.

