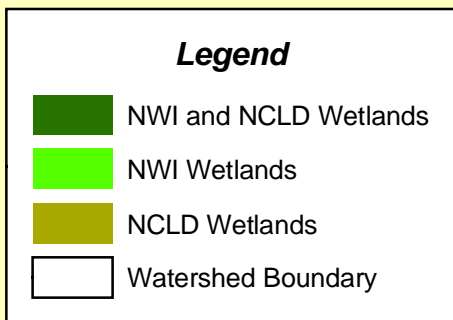
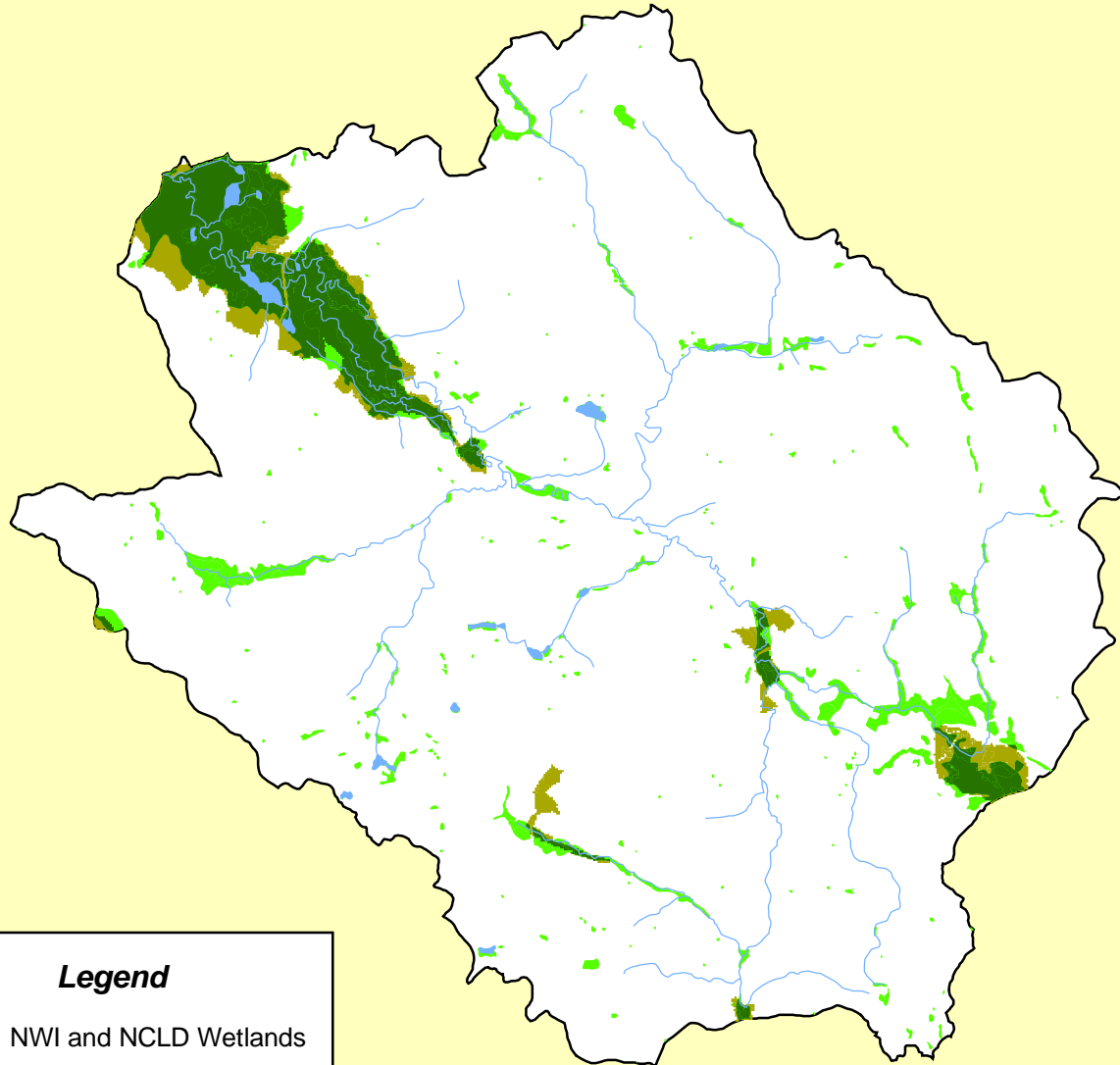


Wetlands within the Muddy Creek Watershed in Pennsylvania



Area of watershed is 19,684 hectares.

Wetlands as designated in the NWI database represent 7.39% of the watershed and account for 1455.32 hectares.

Wetlands as designated in the NLCD database represent 5.96% of the watershed and account for 1172.52 hectares.

Only 889.59 hectares were identified as wetlands by both the NWI and NLCD databases.

